

Fisa de finisaje - Duplex cu 4 camere	CORP 7
--	---------------

NR. APARTAMENT	ETAJ	NR. AP. PROIECT
NUME CLIENT		
TELEFON		

ETAJ 9	VARIANTA	M²	USA
VARIANTA BAIE			
<i>Pardoseala</i>			
<i>Placare Pereti Baza</i>			
<i>Placare Pereti Decor</i>			
Bucatarie			
Living			—
Dormitor			
Hol			—

Fisa de finisaje - Duplex cu 4 camere	CORP 7
--	---------------

NR. APARTAMENT	ETAJ	NR. AP. PROIECT
NUME CLIENT		
TELEFON		

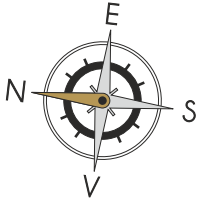
ETAJ 10	VARIANTA	M²	USA
VARIANTA BAIE			
<i>Pardoseala</i>			
<i>Placare Pereti Baza</i>			
<i>Placare Pereti Decor</i>			
Dormitor Mare			
Dormitor Mic			
Hol			—

Fisa de finisaje - Duplex cu 4 camere		CORP 7
--	--	---------------

NR. APARTAMENT		ETAJ		NR. AP. PROIECT
NUME CLIENT				
TELEFON				

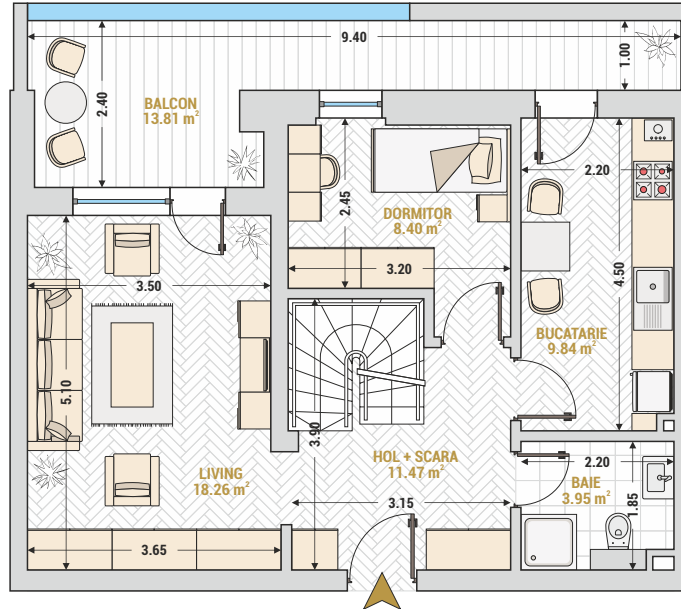
OBSERVATII

SEMNATURA CLIENT

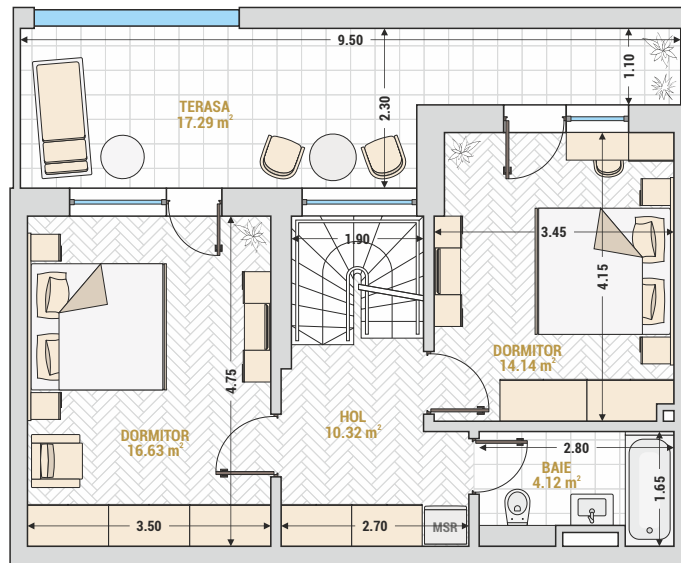


IDEAL RESIDENCE
DEZVOLTATOR IMOBILIAR

ETAJ 9



ETAJ 10



DUPLEX 4 CAMERE TIP 2 - CORP 7

Disponibilitate

E9 - Living	18.26 m ²
E9 - Bucatarie	9.84 m ²
E9 - Dormitor	8.40 m ²
E9 - Baie	3.95 m ²
E9 - Hol + Scara	11.47 m ²
E9 - Balcon	13.81 m ²

E10 - Dormitor	16.63 m ²
E10 - Dormitor	14.14 m ²
E10 - Baie	4.12 m ²
E10 - Hol + Scara	10.32 m ²
E10 - Terasa	17.29 m ²

Etaj 9/10 - nr. 75

Suprafata construita	156.77 m ²
Suprafata utila	97.13 m ²
Suprafata utila + Balcon/Terasa	128.23 m ²



Acest material de prezentare are caracter informativ si poate suferi modificari nesubstantiale